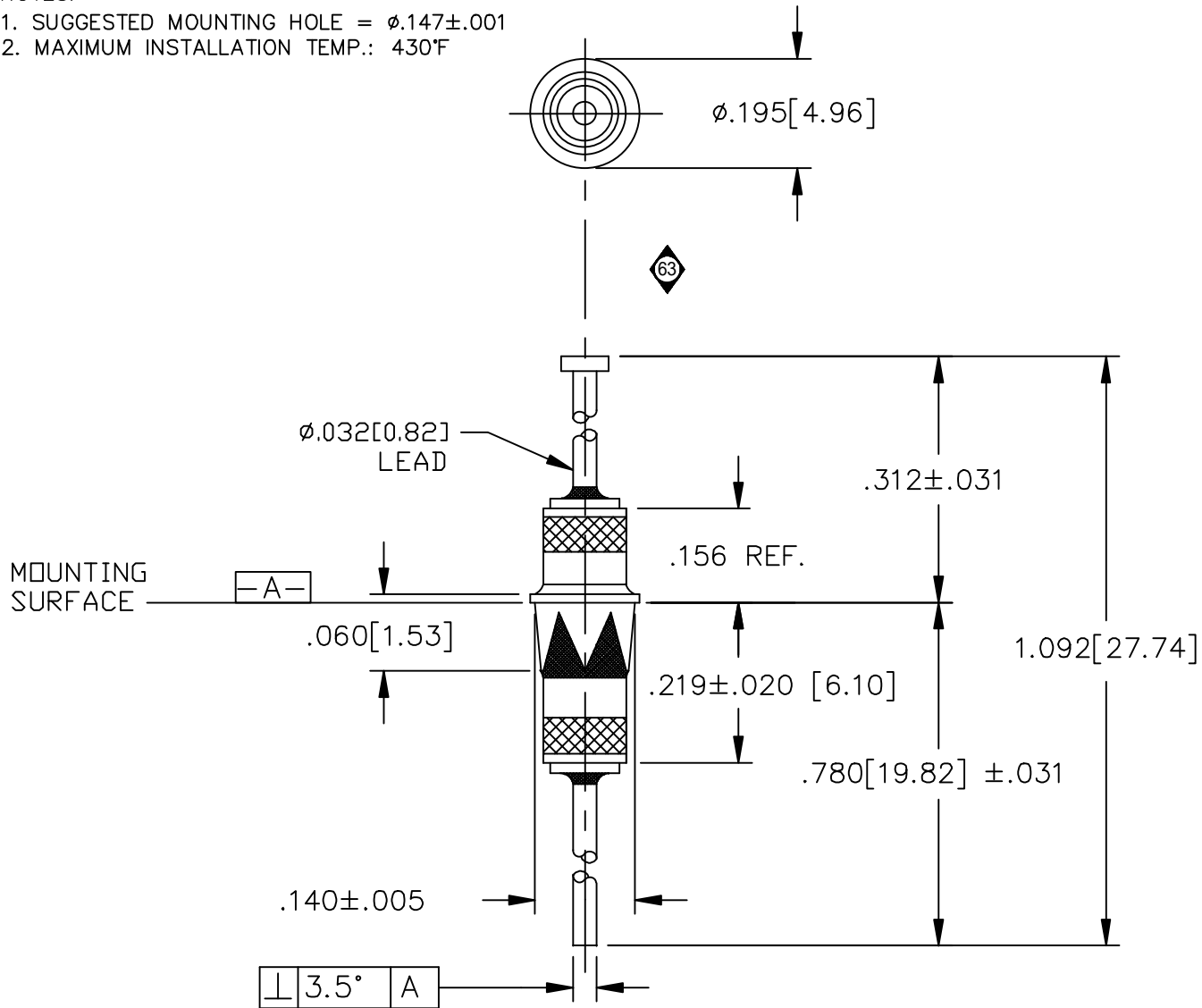


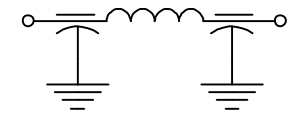
NOTES:

1. SUGGESTED MOUNTING HOLE = $\phi.147 \pm .001$
2. MAXIMUM INSTALLATION TEMP.: 430°F



LEAD FINISH: SILVER	
EYELET FINISH: SOLDER	
CAPACITANCE	22nF GMV
TEMP. RANGE	-55°C TO 125°C
CURRENT	10 AMP MAX.
WORKING VOLTAGE	85°C -- VDC MAX. 125°C 70 VDC MAX.
D.C. RESISTANCE	.01ohms MAX.
MIN. I.L. PER MIL-STD-220 AT 25°C NO LOAD	
FREQ. MHz	I.L. (db)
1	7
10	25
30	60
100	70
300	70
1 GHz	70

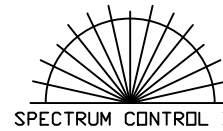
SCHEMATIC



MARKING:

PART: NONE
 BAG:
 51-750-302
 DATE CODE
 QTY./BAG (200 MAX.)

	63	62	61	60	59	58	57	56	55	REV. NO.	TOLERANCES UNLESS OTHERWISE SPECIFIED
	CN. 18946-CPD	CN. 18550-CPD	CN. 206756	CN. 202457 REDRAWN	CN. 202190	CN. 201251	CN. 198289	CN. 194781	CN. 184946 REDRAWN	CHANGE NOTICE	Fractions $\pm 1/64$
											Dec. .xx \pm
											Dec. .xxx $\pm .005$
											Angles $\pm 0^\circ 30'$
											CODE IDENT. NO. OLSP2



FAIRVIEW
 PENNSYLVANIA

Dwn. KRDZALIC	Description
Date 3-29-05	SOLDER MNT. FILTER
Engr. B.ENGLERT	51-750-302
Scale NONE	

