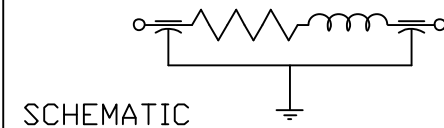


NOTES:

1. SUGGESTED MOUNTING HOLE = ϕ .386
2. HARDWARE IS INCLUDED.
3. THIS IS A LEAD FREE PART.
4. MAX REFLOW IS 245°C FOR 5 SECONDS.

TERMINAL FINISH: TIN/SILVER	
BUSHING FINISH: SILVER	
CAPACITANCE	1500pF MIN
TEMP. RANGE	-55°C TO 125°C
CURRENT	25 AMP MAX.
WORKING VOLTAGE	85°C ---VDC MAX. 125°C: 2500VDC MAX.
D.C. RESISTANCE	.01ohms MAX.
MIN. I.L. PER MIL-STD-220 AT 25°C NO LOAD	
FREQ. MHz	I.L. (db)
1	--
10	5
100	50
1 GHz	50
10 GHz	50



MARKING:

PART: SCI S1280F060
 PACKAGE: (TRAY)Ⓢ
 SCI
 1280F-060
 DATE CODE
 LOT NO.
 QTY./PACK

NOTE: SILVER PAPER TO COVER ALL UNITS.



			01	00	REV. NO.	TOLERANCES UNLESS OTHERWISE SPECIFIED		FAIRVIEW PENNSYLVANIA
			ECN 21851	CN 26501-CPD	CHANGE NOTICE	Fractions $\pm 1/64$		
						Dec. .xx \pm	Date 3/21/06	HIGH VOLTAGE FILTER
						Dec. .xxx \pm .010	Engr. Salorino	1280F-060
						Angles $\pm 0^{\circ} 30'$	Scale NONE	
						CODE IDENT. NO. 0LSP2		