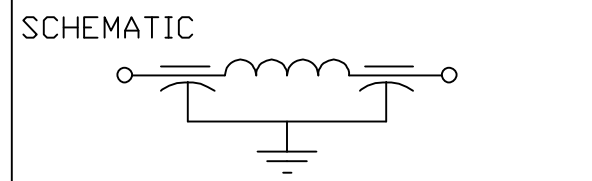



CAPACITANCE	3000pF GMV
TEMP. RANGE	-55°C/+125°C
CURRENT	25 AMPS
WORKING VOLTAGE	85°C 700 VDC 125°C 500 VDC
IL=PER MIL-STD-220 @ 25°C	
FREQ. MHz	I.L. (db)
10	8
100	50
1 GHz	70
10 GHz	70



MARKING:  
 PART: NONE  
 FOAM PACK: SCI  
 1204-050  
 DATE CODE  
 LOT No.  
 QTY./PACK

	8	7	6	5	4	REV. NO.	TOLERANCES UNLESS OTHERWISE SPECIFIED
	CN 70724-ENG	CN 30156-CPD	CN 214017	CN 207017	CN 172577 REDRAWN	CHANGE NOTICE	Fractions ± 1/64
							Dec. .xx±
							Dec. .xxx± .010
							Angles ±0° 30'
							CODE IDENT. NO. 0LSP2

**api**  technologies corp. FAIRVIEW PENNSYLVANIA

Dwn. KEVERLINE	Description
Date 8-21-06	Pi, EYELET STYLE FILTER
Engr. T. TAYLOR	
Scale NONE	1204-050

