

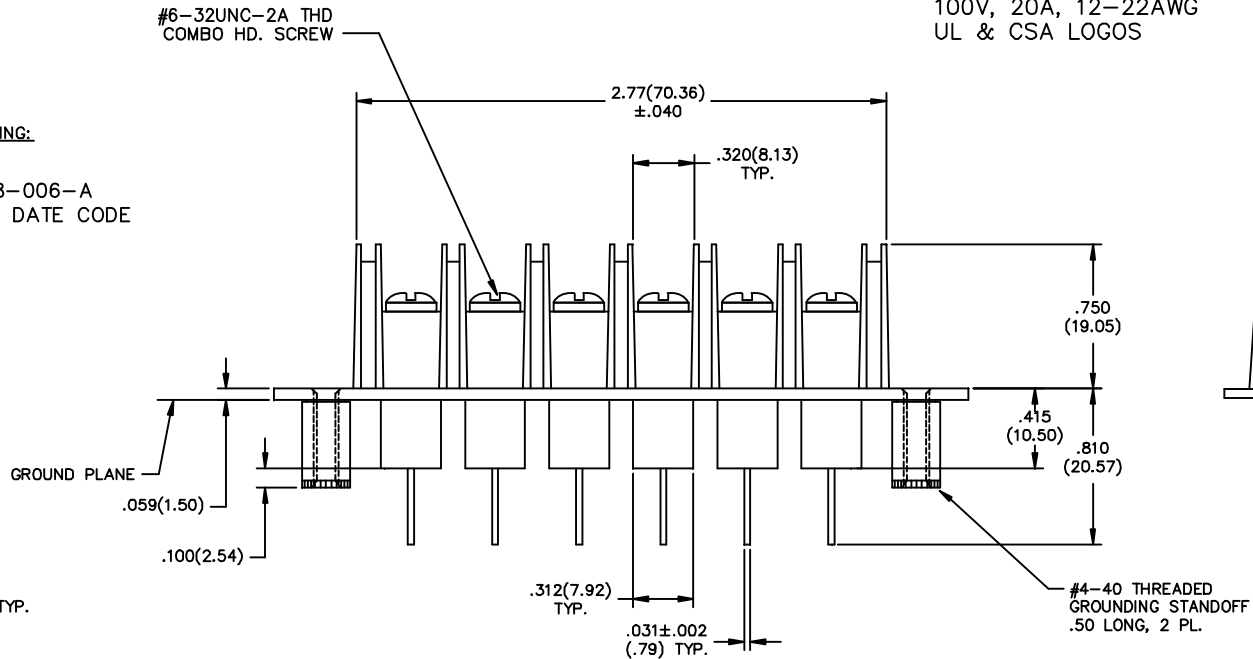
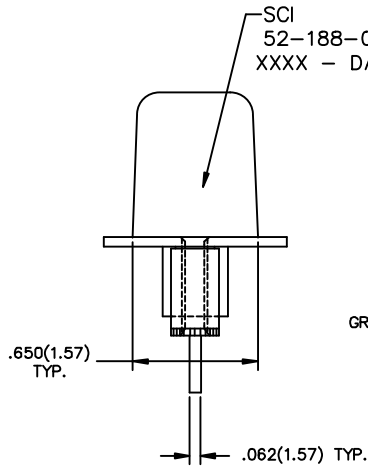
**NOTES:**

- 1) VOLTAGE: 100 VDC.
- 2) CURRENT: 20 AMPS.
- 3) OPERATING TEMPERATURE: -55°C TO +105°C.
- 4) MATERIAL: BLACK THERMOPLASTIC OR EQUIV.
- 5) SCREW TYPE: #6-32 COMBO HD./ZINC PLATED.
- 6) MARKING: 4 PT. CHARACTERS, WHITE INK.
- 7) D.C.RESISTANCE: 0.01 OHMS MAX.
- 8) SHIPPING TRAY MARKING:

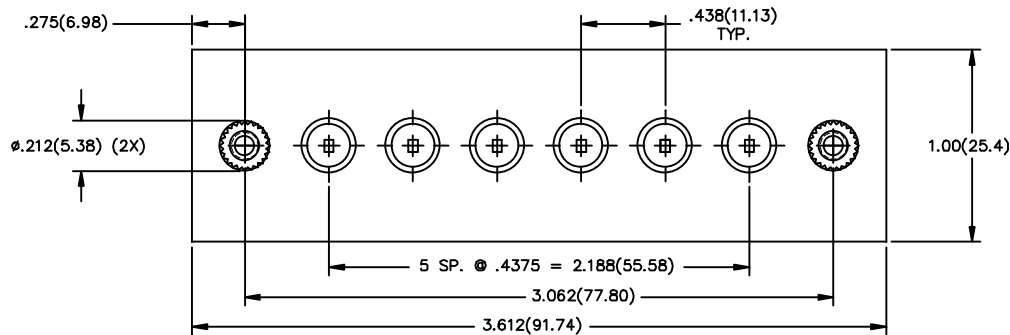
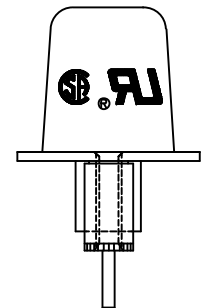
SCI 52-188-006-A DATE CODE  
 100V, 20A, 12-22AWG  
 UL & CSA LOGOS

**MARKING:**


SCI  
 52-188-006-A  
 XXXX - DATE CODE



**MARKING:**



TEST SEQUENCE				
STEP 0400	94-4033-00	VISUAL/MECH	PASS	FAIL
PER IT 38-0468 INSPECT DIMENSIONS AND WORKMANSHIP. PER MIL-STD-105, LEVEL II, 1% AQL COMMENTS: 100%		OPER:		
STEP 0100	94-1002-00	CAP./D.F.	PASS	FAIL
PER IT 38-0245 CAP: 2500pF TO 5200pF DF: <4% MAX COMMENTS: 100%		OPER:		
STEP 0200	94-2005-00	DWV	PASS	FAIL
PER IT 38-0245 DWV: 2000 VDC 25°C 1 MINUTE MINIMUM COMMENTS: 100%		OPER:		
STEP 0300	94-2015-00	I.R.	PASS	FAIL
PER IT 38-0245 IR: 100VDC, 1000 Mohms MIN. 2 MINUTES MAX. COMMENTS: 100%		OPER:		

										UNLESS OTHERWISE SPECIFIED DIMENSIONS ARE IN INCHES. (MILLIMETERS) DO NOT SCALE.	TOLERANCES UNLESS OTHERWISE SPECIFIED Fractions ± 1/64 Dec. .xxx ± .03 Dec. .xxx ± .020 Angles ± 0° 30'	 SPECTRUM CONTROL INC. Erie, Fairview Pennsylvania Dwn. KAUFFMAN Date 3-8-01 Aprd _____ Sheet 1 of 1
										QUALITY PRODUCTS FROM THE SPECIALISTS IN ELECTRO-MAGNETIC COMPATIBILITY		