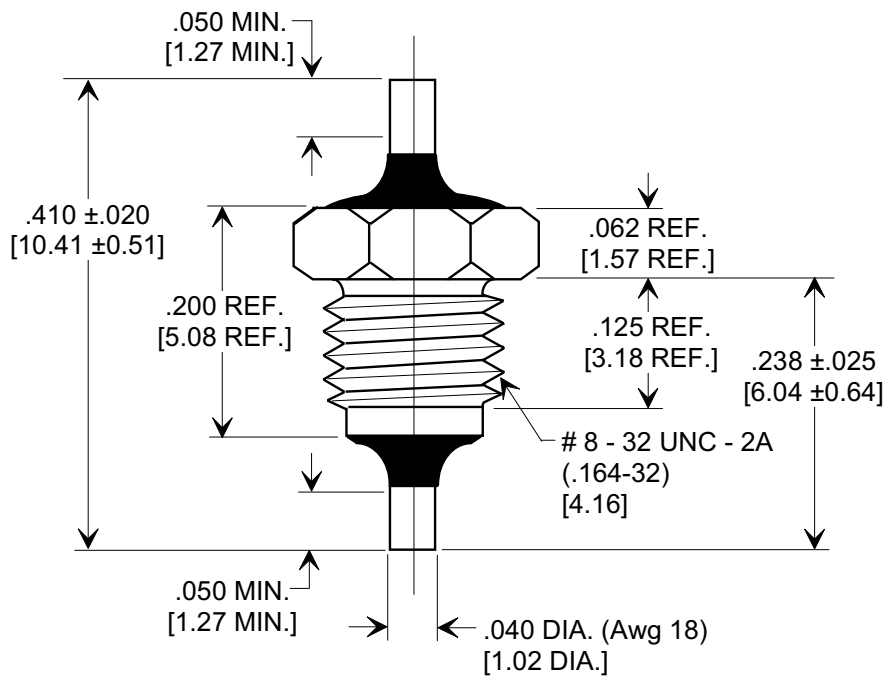
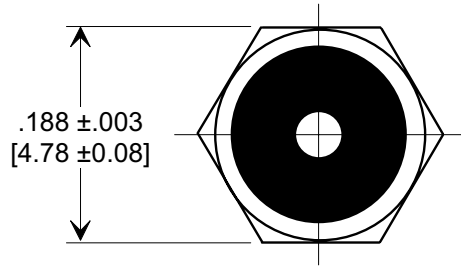
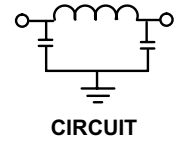
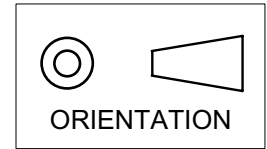


MARKETING SALES DRAWING
DIMENSIONS IN INCHES - DO NOT SCALE THIS DRAWING
DIMENSIONS IN METRIC - []

Electrical Testing
per Tusonix standard
test plans and Mil-Std-202
Test Methods.



65	125 VDC	15 A	3	16	35	42
MIN. CAP. (pF)	125° WORKING VOLTAGE	CURRENT VDC	150 MHz	1 GHz	5 GHz	10-18 GHz
			MINIMUM NO LOAD INSERTION LOSS (dB) AT 25°C PER MIL-STD-220			

X-2015 Rev-0	REVISION RECORD					--TOLERANCES-- Unless Otherwise Specified	Title		
	Original Release C.O.	WAS SK 7094-003-5. E.C. 6-14-93	0	DIMS. REV. & ADDED. E.C. 5-11-94	1		EMI FILTER MIL 15733/44.0003		
	930528-2	RDN TO COMP FMT. ADDED DIM. .050 & .238. DEL. DIM .013 S.M. 05-22-01	1	20010516-2-04	2	DECIMAL ± .031 [.79]	Drawn	S.M. 05-22-01	Scale 6 X
	20010530-2-01	CORRECT REV. RECORD. S.M. 05-30-01	2	20010530-2-01	3	ANGLES ±	Approved	T.C. 05-22-01	
	20011005-5-05	REVISED TITLE. S.M. 10-11-01	3	20011005-5-05	4	TUSONIX TUCSON, ARIZONA	A	4205-501	
20020321-2-01	INSERTION LOSS REV'D 16,35,42 WERE 40,50,50 L.E. 03-21-02	4	20020321-2-01	5					