

SPECIFICATION FOR APPROVAL



TO: _____

PART NO.		REV.		DELTA SAMPLE ISSUE NO	
PART NAME	EMI FILTER			DELTA MODEL	10DCCG5C
ORDER P/N.	10DCCG5C			SAMPLE ISSUE DATE	

1. ELECTRICAL CHARACTERISTICS:

- 1-1. VOLTAGE RATING 115/250VAC
- 1-2. CURRENT RATING
 - A. AT 115VAC 10 A RMS Max.
 - B. AT 250VAC 10 A RMS Max.
- 1-3. OPERATING FREQUENCY..... 50/60 Hz
- 1-4. LEAKAGE CURRENT: EACH LINE TO GROUND
 - A. @115VAC 60Hz 0.8 mA Max.
 - B. @250VAC 50Hz 1.5 mA Max.
- 1-5. HIPOT RATING (FOR ONE MINUTE)
 - A. LINE TO GROUND 2250VDC
 - B. LINE TO LINE 1450VDC
- 1-6. TEMPERATURE RANGE: -25 TO +100 DEGREE C
- 1-7. MINIMUM INSERTION LOSS IN dB: (AT 50 OHM SYSTEM)

FREQ. MHz	.01	.03	.05	.15	.50	1.0	2.0	5.0	10	20	30
COM. MODE dB	10	15	20	30	40	40	40	40	40	35	25
DIF. MODE dB	3	8	12	45	65	65	65	60	50	40	30

1-8. SAFETY

REPORT BY	CHECKED BY	APPROVED BY	3	
			2	
			REV.1	

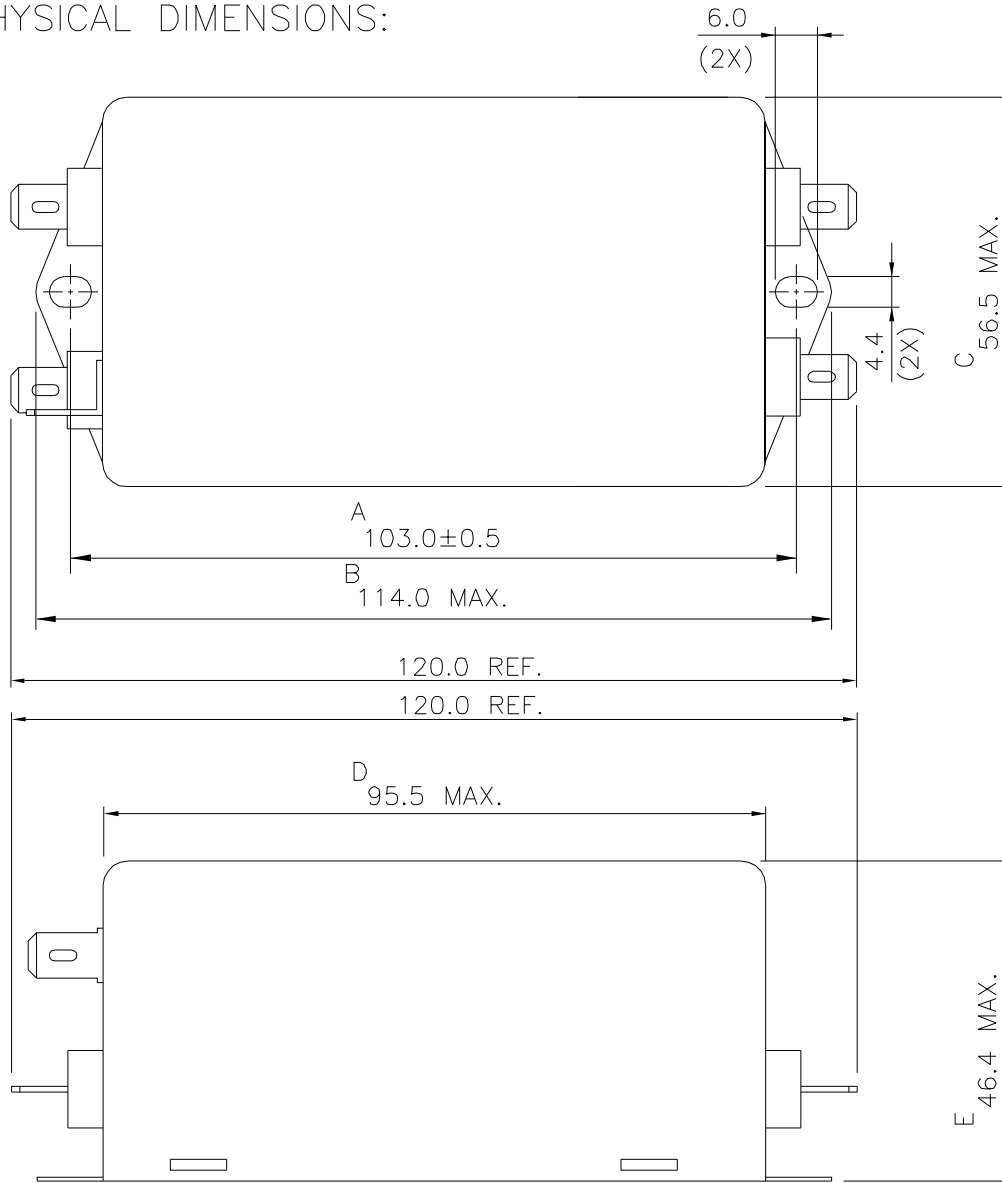
SPECIFICATION FOR APPROVAL



TO: _____

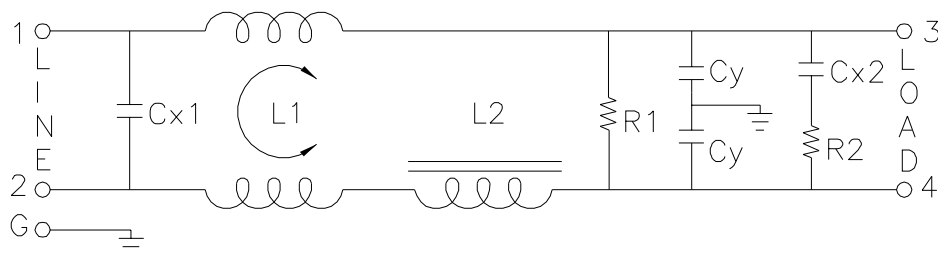
PART NO.		REV.		DELTA SAMPLE ISSUE NO	
PART NAME	EMI FILTER			DELTA MODEL	10DCCG5C
ORDER P/N.	10DCCG5C			SAMPLE ISSUE DATE	

2. PHYSICAL DIMENSIONS:



UNIT: mm

3. SCHEMATIC:



- L1: 9.5mH
- L2: 70uH
- Cx1: 1.0uF+0.47uF
- Cx2: 0.22uF
- Cy: 10000pF
- R1: 330KΩ
- R2: 1.0Ω

REPORT BY	CHECKED BY	APPROVED BY	UNLESS OTHERWISE SPECIFIED DIMENSION TOLERANCE DCEIMALS .X± .XX± ANGLES±		
			REV.	01.07.20	

DELTA ELECTRONICS, INC.

186 RUEY KUANG ROAD, NEIHU. TAIPEI 114,
TAIWAN, R.O.C.
TEL:886-2-87972088 FAX:886-2-87972120