

Specification Status: Released

Maximum Electrical Rating
Operating Voltage: **16Vdc**
Interrupt Current: **60A**

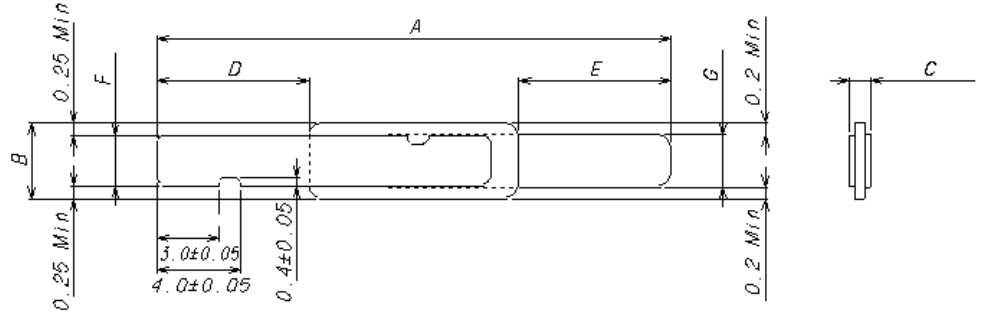
Chip Size: 3.6 X 10 mm

Leads: Nickel 1/4H
0.125mm nominal thickness

Solder: Lead-free

Tape: None

Marking: None



*Dimensions on the drawing are for reference only.

TABLE I. DIMENSIONS:

	A		B		C		D		E		F		G	
	MIN	MAX	MIN	MAX	MIN	MAX	MIN	MAX	MIN	MAX	MIN	MAX	MIN	MAX
mm:	23.6	25.6	3.55	3.65	---	0.7	6.8	7.8	6.8	7.8	2.35	2.45	2.45	2.55
In*:	0.944	1.024	0.142	0.146	---	0.028	0.27	0.31	0.27	0.31	0.094	0.098	0.098	0.102

*Rounded off approximation

TABLE II. PERFORMANCE RATINGS: As measured in Mueller Kelvin Clips model BU-75K.

I HOLD	CURRENT TRIP LIMITS									TIME TO TRIP	REFERENCE RESISTANCE	ONE-HOUR POST-TRIP RESISTANCE	TRIPPED-STATE POWER DISSIPATION			
	AMPS AT 0°C			AMPS AT 25°C		AMPS AT 60°C		AMPS AT -°C						SECONDS AT 25°C, 11.0A		OHMS AT 25°C
HOLD	HOLD	TRIP	HOLD	TRIP	HOLD	TRIP	HOLD	TRIP	HOLD	TRIP	MIN	MAX	MIN	MAX	MIN	MAX
2.2	3.0	7.0	2.2	5.3	1.1	3.1	---	---	---	5.0	0.017	0.029	0.017	0.058	1.8	

Recognitions:
Reference Documents:
Precedence:
Effectivity:
CAUTION:

UL, TUV, CSA
PS300
This specification takes precedence over documents referenced herein.
Reference documents shall be the issue in effect on the date of invitation for bid.
Operation beyond the rated voltage or current may result in rupture, electrical arcing or flame.

Materials Information:
ROHS Compliant

ELV Compliant

Pb-Free

Directive 2000/53/EC
Compliant

Directive 2002/95/EC
Compliant

